

Macro and Socioeconomic Indicators

GDP (millions of US\$)	2000	2001	2002	2003	2004	2005	2006	2007	2008	2009	2010	2011
PIB (constant)	8,398	8,539	8,752	8,989	9,364	9,778	10,247	10,715	11,373	11,755	12,240	12,863
PIB (current)	8,398	8,142	7,905	8,082	8,773	9,549	11,451	13,121	16,675	17,340	19,650	24,427
National Income (millions of US\$)												
National Income (constant)	7,972	8,061	8,434	8,701	9,089	9,757	11,163	12,013	12,977	12,893	13,670	
National Income (current)	8,559	8,326	8,070	8,254	8,880	9,757	11,877	13,897	17,422	17,879	19,862	
Agricultural Production												
AVA (millions of current \$)	1,089	1,079	1,024	1,085	1,169	1,126	1,252	1,314	1,741	1,934	2,042	2,301
AVA Share of GDP (%)	15.01	15.22	14.90	15.42	15.37	14.38	13.88	12.88	13.47	13.83	12.85	11.75
Annual Variation of the CPI (inflation)												
	4.61	1.59	0.93	3.34	4.44	5.39	4.29	8.71	14.00	3.35	2.50	9.81
Population												
Total Population	8,307,248	8,476,709	8,646,659	8,815,911	8,982,917	9,146,655	9,306,660	9,463,497	9,618,466	9,773,441	9,929,000	10,088,108
Share of Women in the Total Population (%)	50.24	50.24	50.25	50.25	50.25	50.25	50.23	50.20	50.18	50.15	50.13	50.11
Rural Population	3,173,369	3,197,415	3,220,016	3,240,729	3,259,002	3,274,502	3,288,974	3,300,868	3,310,676	3,319,061	3,336,243	
Rural Population as a Percentage of the Total Population	38.20	37.72	37.24	36.76	36.28	35.80	35.34	34.88	34.42	33.96	33.60	
Rural Agricultural Employment (%)	83.90		85.70		69.80			75.30				
Poverty and Extreme Poverty (total and rural)												
Poverty (%)			62.40		63.90			54.00				
Rural Poverty (%)			79.20		80.60			75.80				
Total Extreme Poverty (%)			37.10		34.70			31.20				
Rural Extreme Poverty (%)			62.90		58.80			59.00				
GINI Coefficient												
National			0.614		0.561			0.565				
Rural			0.632		0.522			0.599				

Source: World Bank (WDI) except for national income, poverty and extreme poverty, Gini Coefficient taken from ECLAC (CEPALSTAT).

Trade Indicators

Top Agricultural Exports (2011)	Share of Total Agricultural Exports (%)	Value (millions of US\$)
Soya-bean oil-cake and other solid residues	31.81%	372.75
Soya-bean oil, fractions, not chemically modified	22.28%	261.05
Coconuts, Brazil nuts and cashew nuts, fresh or dried	12.66%	148.32
Buckwheat, millet and canary seed, other cereals	5.43%	63.69
Safflower, sunflower and cotton-seed oil, fractions	5.21%	61.03

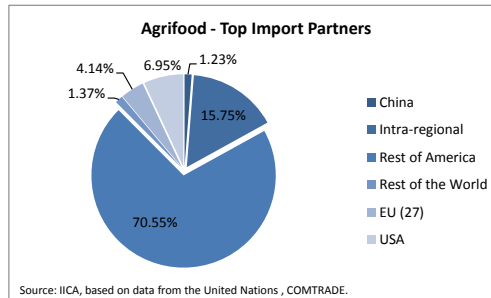
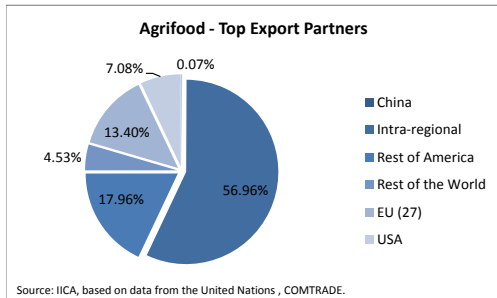
Source: IICA, based on data from the United Nations , COMTRADE.

Top Agricultural Imports (2011)	Share of Total Agricultural Imports (%)	Value (millions of US\$)
Wheat or meslin flour	11.83%	78.37
Solid cane or beet sugar and chemically pure sucrose	11.79%	78.09
Food preparations, nes	9.91%	65.62
Maize (corn)	5.56%	36.83
Malt extract, flour, dairy preparations, low cocoa	4.07%	26.95

Source: IICA, based on data from the United Nations , COMTRADE.

RCA of the Top Agricultural Exports	2000	2001	2002	2003	2004	2005	2006	2007	2008	2009	2010	2011
Soya-bean oil-cake and other solid residues		14.696	11.567			12.880	14.356	11.693	11.064	11.361	11.281	10.627
Soya-bean oil, fractions, not chemically modified	4.258	4.217	6.525	5.876	7.707	6.189	6.465	5.616	8.239	8.550	8.050	5.371
Coconuts, Brazil nuts and cashew nuts, fresh or dried	4.866	4.977	5.114	5.237	5.583	4.482	3.266	3.504	3.623	4.187	3.913	4.680
Buckwheat, millet and canary seed, other cereals	4.928	3.882	4.459	6.469	5.330	9.383	5.393	4.990	5.070	6.074	7.042	7.275
Safflower, sunflower and cotton-seed oil, fractions	2.972	3.130	4.356	7.798	5.489	4.925	4.370	4.777	4.979	5.316	5.402	5.038

Source: IICA, based on data from the United Nations , COMTRADE.



	2000	2001	2002	2003	2004	2005	2006	2007	2008	2009	2010	2011
Agricultural Trade Balance (US\$ millions)	173.49	136.32	199.23	266.10	391.73	328.29	346.21	366.83	511.21	647.03	623.48	509.67
Share of Agricultural Exports as Percentage of the Total Exports of Goods (%)	29.59	29.98	32.36	30.42	27.85	20.90	14.86	15.67	14.51	20.06	15.50	12.86
Total Trade Openness Index	39.36	37.59	39.73	41.26	47.20	53.83	61.54	63.52	71.40	55.97	62.28	68.72
Total Trade and Agricultural Openness Index	63.24	62.53	67.21	68.03	73.91	74.69	72.59	86.89	85.64	76.44	73.80	79.70

Source: IICA, based on data from the United Nations , COMTRADE.

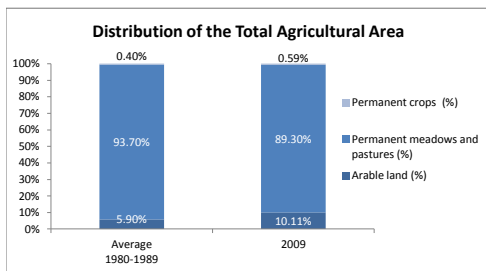
Production Indicators

Agricultural Area	Average 1980-1989	2009
Agricultural Area (km2)	346,524.0	369,540.0
Agricultural Area per Capita (m2)	58,640.2	37,810.6

Source: FAO, FAOSTAT.

Forests and Woodland and Forest Cover in relation to the Total Area	1990	2009
Forests area (km2)	627,950	575,036
Forest area in relation to Total Area (%)	57%	52%

Source: FAO, FAOSTAT.



Top Crops (Hectares)	Average 2000-2010	Share of Total Number of Hectares Harvested
Soybeans	801,561.3	31.60%
Maize	340,229.8	13.41%
Rice, paddy	162,591.5	6.41%
Sunflower seed	150,284.3	5.92%
Potatoes	140,799.3	5.55%

Source: IICA, based on data from FAO, FAOSTAT.

Agricultural Labor Productivity	2000	2001	2002	2003	2004	2005	2006	2007	2008	2009	2010	2011
AVA per worker (constant 2000 US\$)	697.98	705.41	691.67	733.99	717.82	734.77	746.58	725.94	728.77	739.57	715.67	

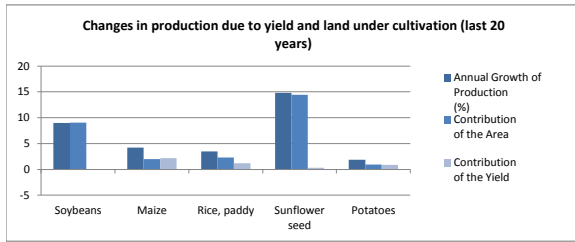
Source: World Bank, WDI.

Economic Yield per Hectare (constant US\$)	2000	2001	2002	2003	2004	2005	2006	2007	2008	2009	2010	2011
AVA Deflated / Hectare Harvested	499.88	522.49	494.67	544.32	523.43	436.85	420.39	379.91	430.83	441.97	451.87	

Source: IICA, based on data from FAO (FAOSTAT) and World Bank (WDI).

Yield of Principal Crops based on Hectares Planted (tons per hectare)	Top Crops	
	1990-1995	2005-2010
Soybeans	1.96	1.82
Maize	1.75	2.39
Rice, paddy	1.92	2.33
Sunflower seed	1.23	1.27
Potatoes	4.78	5.44

Source: IICA, based on data from FAO (FAOSTAT).



Agricultural area irrigated in relation to the Total Agricultural Area	2000	2001	2002	2003	2004	2005	2006	2007	2008	2009	2010	2011
Irrigated Area (%)	0.35%	0.36%	0.36%	0.36%	0.38%	0.42%	0.43%	0.45%	0.46%	0.47%		

Source: ECLAC, CEPALSTAT.

Food Security Indicators

Prevalence of Undernourishment

	1995-1997	2006-2008
Prevalence of Undernourishment (% of total population)	24	27

Source: FAO, FAOSTAT.

Net Food Exports	2000	2001	2002	2003	2004	2005	2006	2007	2008	2009	2010	2011
Net Food Exports (US\$ millions)	25	-45	-4	65	144	136	148	148	250	323	325	165

Source: IICA, based on data from the United Nations , COMTRADE.

Consumer Price Index (CPI) and Food CPI (base year 2005 = 100)	2000	2001	2002	2003	2004	2005	2006	2007	2008	2009	2010	2011
CPI of Food	86.44	86.98	86.17	89.19	94.52	100.00	105.61	120.10	149.64	155.50	160.82	182.69
CPI of Basic Basket	85.74	87.11	87.91	90.85	94.88	100.00	104.28	113.36	129.24	133.56	136.91	149.85

Source: ECLAC, CEPALSTAT.

Domestic Food Supply per Capita (kg per year)

	2000	2001	2002	2003	2004	2005	2006	2007	2008	2009	2010	2011
Vegetable oils	15.07		7.63	12.75	12.98	10.55			4.14			
Meat	48.30	49.29		49.94	50.59	51.40	51.86	57.12	58.58	64.38	69.98	
Cereals	178.63	183.67	184.47	198.70	165.07	203.71	210.24	191.70	221.00	242.37	191.29	
Fruits	121.37	122.36	120.42	109.49	94.30	92.51	88.18	87.52	86.67	90.80	92.64	
Vegetables	61.19	60.32	59.80	53.02	52.75	52.54	41.07	39.94	39.26	36.59	36.31	
Milk	33.83	24.77	38.73	38.50			31.63	31.83	31.51	41.19	43.47	
Roots and tubers	138.38	132.93	133.56	132.16	130.87	130.07	126.59	123.83	123.88	130.45	131.51	

Source: IICA, based on data from the United Nations (COMTRADE), FAO (FAOSTAT) and World Bank (WDI).

Share of Imports in the Domestic Food Supply (%)

	2000	2001	2002	2003	2004	2005	2006	2007	2008	2009	2010	2011
Vegetable oils			1.47	0.61	0.26	0.53			2.91			
Meat	0.07	0.22		0.01	0.04	0.03	0.04	0.04	0.04	0.12	0.04	
Cereals	16.34	15.66	17.79	16.98	16.00	11.44	6.87	6.97	4.97	2.10	4.26	
Fruits	1.75	2.72	2.54	1.88	2.38	2.25	2.50	2.43	2.52	3.11	3.26	
Vegetables	0.56	1.15	0.34	0.12	0.21	0.18	0.59	0.34	0.24	0.72	0.31	
Milk	3.92	0.50	0.52	0.25			0.31	0.10	0.10	0.09	0.08	
Roots and tubers	0.10	0.53	0.25	0.09	0.70	0.01	0.17	1.47	1.91	0.81	1.23	

Source: IICA, based on data from the United Nations (COMTRADE) and FAO (FAOSTAT).

Share of Imports in the Domestic Caloric Supply (%)

	2000	2001	2002	2003	2004	2005	2006	2007	2008	2009	2010	2011
Caloric Dependence (%)	17.53	11.67		10.70			5.41	5.63	3.87	1.96	3.41	

Source: IICA, based on data from the United Nations (COMTRADE) and FAO (FAOSTAT).

International Monetary Reserves Measured in Months of Food Imports

	2000	2001	2002	2003	2004	2005	2006	2007	2008	2009	2010	2011
Months of Food Imports	58.4	55.1	46.7	60.2	73.0	93.5	152.1	179.8	206.7	272.4	291.8	235

Source: IICA, based on data from the United Nations (COMTRADE) y World Bank (WDI).

	2000	2001	2002	2003	2004	2005	2006	2007	2008	2009	2010	2011
Agricultural Deflator / GDP Deflator	100.0	100.5	100.2	98.1	101.2	89.1	83.0	79.9	86.2	91.8	90.1	84.6
Agricultural Deflator	100.0	95.8	90.5	88.2	94.8	87.0	92.8	97.8	126.4	135.3	144.6	160.6
GDP Deflator	100.0	95.3	90.3	89.9	93.7	97.7	111.8	122.5	146.6	147.5	160.5	189.9

Source: IICA, based on data from World Bank, WDI.

	2000	2001	2002	2003	2004	2005	2006	2007	2008	2009	2010	2011
AVA Deflator Adjusted by GDP Deflator (millions of US\$)	1,088.9	1,131.9	1,133.8	1,206.9	1,247.5	1,153.1	1,120.8	1,072.7	1,187.7	1,311.0	1,271.77	1,212

Source: IICA, based on data from World Bank, WDI.

External Terms of Trade (ETT) for Agriculture (2005=100)

	2000	2001	2002	2003	2004	2005	2006	2007	2008	2009	2010	2011
ETT Agr	145.0	105.6	98.1	102.2	113.0	100.0	99.6	100.9	109.0	92.8	96.3	107.5

Source: IICA, based on data from the United Nations, COMTRADE.

External Terms of Trade (2005=100)

	2000	2001	2002	2003	2004	2005	2006	2007	2008	2009	2010	2011
Terms of trade for goods and services	79.3	77.2	85.4	89.1	94.2	100.0	122.8	126.3	129.1	126.3	140.2	155.1

Source: World Bank, WDI.