

Macro and Socioeconomic Indicators

GDP (millions of US\$)	2000	2001	2002	2003	2004	2005	2006	2007	2008	2009	2010	2011
PIB (constant)	53,290	53,405	56,086	58,347	61,251	65,433	70,498	76,776	84,302	85,006	92,507	98,901
PIB (current)	53,290	53,936	56,772	61,347	69,725	79,385	92,304	107,233	126,823	126,923	153,883	176,662
National Income (millions of US\$)												
National Income (constant)	62,542	62,442	65,444	67,783	70,668	76,085	85,349	94,172	101,236	101,576	113,157	
National Income (current)	52,927	53,894	56,338	60,421	67,448	76,085	86,943	101,673	123,276	125,758	150,297	
Agricultural Production												
AVA (millions of current \$)	4,134	4,076	4,100	4,284	4,626	5,211	5,865	6,879	8,518	8,814	11,799	12,479
AVA Share of GDP (%)	8.50	8.25	7.85	7.63	7.29	7.21	6.95	7.01	7.37	7.53	8.49	7.82
Annual Variation of the CPI (inflation)												
	3.76	1.98	0.19	2.26	3.66	1.62	2.00	1.78	5.79	2.94	1.53	3.37
Population												
Total Population	25,861,887	26,228,274	26,579,252	26,916,342	27,242,033	27,558,769	27,866,387	28,166,078	28,463,338	28,765,162	29,076,000	29,399,817
Share of Women in the Total Population (%)	49.84	49.84	49.85	49.85	49.86	49.87	49.87	49.88	49.88	49.89	49.89	49.89
Rural Population	7,577,533	7,663,902	7,745,194	7,821,889	7,894,741	7,964,484	8,025,519	8,083,664	8,140,515	8,198,071	6,713,358	
Rural Population as a Percentage of the Total Population	29.30	29.22	29.14	29.06	28.98	28.90	28.80	28.70	28.60	28.50	23.09	
Rural Agricultural Employment (%)		78.00		80.90				75.00	74.00	74.10	72.60	
Poverty and Extreme Poverty (total and rural)												
Poverty (%)		54.70		52.50	48.60	48.70	44.50	39.30	36.20	34.80	31.30	
Rural Poverty (%)		78.40		75.20	69.80	70.90	69.30	64.60	59.80	60.30	54.20	
Total Extreme Poverty (%)		24.40		21.40	17.10	17.40	16.10	13.80	12.60	11.50	9.80	
Rural Extreme Poverty (%)		51.30		44.60	36.80	37.90	37.10	32.90	29.70	27.80	23.30	
GINI Coefficient												
National		0.525		0.530				0.500	0.476	0.469	0.458	
Rural		0.439		0.371				0.425	0.421	0.402	0.403	

Source: World Bank (WDI) except for national income, poverty and extreme poverty, Gini Coefficient taken from ECLAC (CEPALSTAT).

Trade Indicators

Top Agricultural Exports (2011)	Share of Total Agricultural Exports (%)	Value (millions of US\$)
Flour etc of meat, fish or offal for animal feed	23.18%	1,781.68
Coffee, coffee husks and skins and coffee substitutes	20.57%	1,580.84
Vegetables nes, prepared/preserved, not frozen/vinegar	5.35%	411.59
Molluscs	5.05%	388.36
Fish, marine mammal fat or oil not chemically modified	4.33%	332.64

Source: IICA, based on data from the United Nations , COMTRADE.

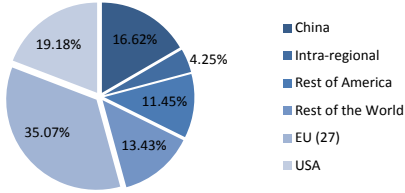
Top Agricultural Imports (2011)	Share of Total Agricultural Imports (%)	Value (millions of US\$)
Maize (corn)	14.92%	627.71
Wheat and meslin	14.07%	591.99
Soya-bean oil-cake and other solid residues	9.81%	412.71
Soya-bean oil, fractions, not chemically modified	9.61%	404.47
Cotton, not carded or combed	5.19%	218.47

Source: IICA, based on data from the United Nations , COMTRADE.

RCA of the Top Agricultural Exports	2000	2001	2002	2003	2004	2005	2006	2007	2008	2009	2010	2011
Flour etc of meat, fish or offal for animal feed	8.489	8.699	8.005	7.366	7.587	6.803	6.196	6.245	6.339	6.364	6.324	6.401
Coffee, coffee husks and skins and coffee substitutes	7.993	7.048	6.998	6.757	6.998	4.881	6.799	6.577	6.833	6.629	6.865	7.027
Vegetables nes, prepared/preserved, not frozen/vinegar	5.137	5.144	5.050	5.110	5.312	5.157	5.192	5.129	5.394	4.926	4.888	4.299
Molluscs	5.126	4.414	5.824	4.522	4.731	4.397	3.921	4.363	4.389	5.272	3.618	4.093
Fish, marine mammal fat or oil not chemically modified	10.951	12.921	12.202	8.102	10.856	13.250	10.276	6.520	4.001	5.029	4.542	3.590

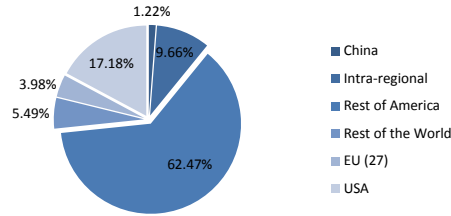
Source: IICA, based on data from the United Nations , COMTRADE.

Agrifood - Top Export Partners



Source: IICA, based on data from the United Nations , COMTRADE.

Agrifood - Top Import Partners



Source: IICA, based on data from the United Nations , COMTRADE.

	2000	2001	2002	2003	2004	2005	2006	2007	2008	2009	2010	2011
Agricultural Trade Balance (US\$ millions)	846.17	715.82	735.12	715.58	1,125.78	1,426.51	1,900.33	1,650.72	1,852.08	2,133.23	2,389.07	3,478.14
Share of Agricultural Exports as Percentage of the Total Exports of Goods (%)	26.03	26.08	24.48	21.41	20.26	17.41	15.05	14.21	16.15	17.62	16.37	16.84
Total Trade Openness Index	26.80	26.22	26.39	27.98	32.32	37.31	42.33	45.04	48.29	38.30	42.21	47.20
Total Trade and Agricultural Openness Index	66.00	69.80	71.54	70.75	84.56	86.97	89.53	90.83	96.88	82.69	77.05	95.32

Source: IICA, based on data from the United Nations , COMTRADE.

Production Indicators

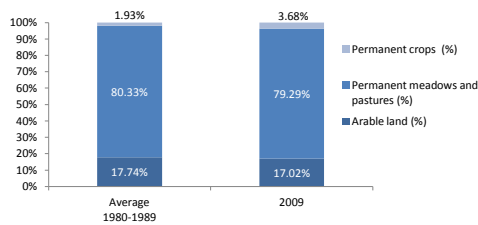
Agricultural Area	Promedio 1980-1989	2009
Agricultural Area (km2)	188,338.0	214,400.0
Agricultural Area per Capita (m2)	9,782.7	7,453.5

Source: FAO, FAOSTAT.

Forests and Woodland and Forest Cover in relation to the Total Area	1990	2009
Forests area (km2)	701,560	681,420
Forest area in relation to Total Area (%)	55%	53%

Source: FAO, FAOSTAT.

Distribution of the Total Agricultural Area



Top Crops (Hectares)	Average 2000-2010	Share of Total Number of Hectares Harvested
Maize	488,509.9	17.13%
Rice, paddy	338,119.4	11.86%
Coffee, green	307,799.4	10.79%
Potatoes	267,128.8	9.37%
Barley	150,833.4	5.29%

Source: IICA, based on data from FAO, FAOSTAT.

Agricultural Labor Productivity	2000	2001	2002	2003	2004	2005	2006	2007	2008	2009	2010	2011
AVA per worker (constant 2000 US\$)	1,236.26	1,216.18	1,270.86	1,271.88	1,275.01	1,331.70	1,427.87	1,457.24	1,550.30	1,566.75	1,606.99	

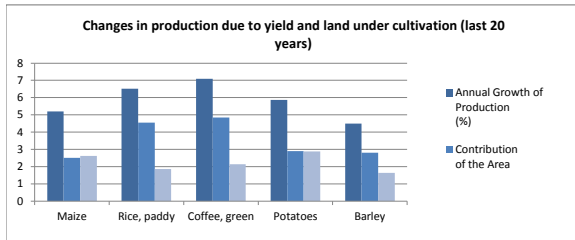
Source: World Bank, WDI.

Economic Yield per Hectare (constant US\$)	2000	2001	2002	2003	2004	2005	2006	2007	2008	2009	2010	2011
AVA Deflated / Hectare Harvested	1,494.44	1,503.52	1,487.43	1,498.22	1,536.93	1,531.83	1,555.50	1,690.05	1,871.41	1,898.63	2,289.25	

Source: IICA, based on data from FAO (FAOSTAT) and World Bank (WDI).

Yield of Principal Crops based on Hectares Planted (tons per hectare)	1990-1995	2005-2010
Maize	2.00	2.88
Rice, paddy	5.38	7.07
Coffee, green	0.53	0.74
Potatoes	8.47	12.83
Barley	1.04	1.31

Source: IICA, based on data from FAO (FAOSTAT).



Agricultural area irrigated in relation to the Total Agricultural Area	2000	2001	2002	2003	2004	2005	2006	2007	2008	2009	2010	2011
Irrigated Area (%)	5.65%	5.65%	5.65%	5.64%	5.62%	5.60%	5.59%	5.58%	5.58%	5.58%		

Source: ECLAC, CEPALSTAT.

Food Security Indicators

Prevalence of Undernourishment

	1995-1997	2006-2008
Prevalence of Undernourishment (% of total population)	21	16

Source: FAO, FAOSTAT.

Net Food Exports	2000	2001	2002	2003	2004	2005	2006	2007	2008	2009	2010	2011
Net Food Exports (US\$ millions)	79		47	116	340	464	950	701	814	1,092	1,262	2,257

Source: IICA, based on data from the United Nations , COMTRADE.

Consumer Price Index (CPI) and Food CPI (base year 2005 = 100)	2000	2001	2002	2003	2004	2005	2006	2007	2008	2009	2010	2011
CPI of Food	92.90	93.36	93.13	93.85	99.07	100.00	102.43	105.00	114.61	119.46	122.49	128.13
CPI of Basic Basket	90.86	92.66	92.83	94.93	98.41	100.00	102.00	103.81	109.82	113.05	114.78	118.60

Source: ECLAC, CEPALSTAT.

Domestic Food Supply per Capita (kg per year)

	2000	2001	2002	2003	2004	2005	2006	2007	2008	2009	2010	2011
Vegetable oils	7.70	11.57	12.33	11.94	12.19	13.42	14.70	15.10	15.04	14.15	16.77	
Meat	32.60	31.31	32.42	33.00	33.20	36.13	38.29	40.34	43.77	46.56	48.57	
Cereals	222.60	232.17	231.92	232.38	220.58	254.09	256.22	257.41	271.03	285.16	296.30	
Fruits	123.62	127.65	128.26	132.85	136.19	134.08	140.41	139.75	138.85	137.38	154.83	
Vegetables	72.38	71.08	69.09	70.05	68.99	66.16	76.68	79.11	85.82	84.73	87.28	
Milk	42.61	43.68	46.47	47.63	49.27	54.30	52.79	56.09	58.57	59.09		
Roots and tubers	181.74	156.23	177.10	168.48	162.41	172.73		178.01	183.99		193.76	

Source: IICA, based on data from the United Nations (COMTRADE), FAO (FAOSTAT) and World Bank (WDI).

Share of Imports in the Domestic Food Supply (%)

	2000	2001	2002	2003	2004	2005	2006	2007	2008	2009	2010	2011
Vegetable oils	71.21	75.08	81.20	78.90	78.65	80.55	79.83	79.77	79.14	77.97	81.15	
Meat	1.14	0.84	0.94	0.83	0.74	0.91	0.97	1.09	1.13	1.39	1.94	
Cereals	38.37	38.73	37.67	37.42	42.93	41.13	43.21	44.54	39.43	38.59	43.67	
Fruits	1.25	1.95	1.22	1.05	1.06	1.14	1.10	1.09	1.20	1.62	1.68	
Vegetables	0.01	0.04	0.01	0.01	0.00	0.01	0.00	0.01	0.00	0.00	0.00	
Milk	1.37	0.97	0.50	0.57	0.55	0.59	0.63	0.62	0.65	0.96		
Roots and tubers	0.00	0.00	0.00	0.00	0.00	0.00	0.00	0.00	0.00	0.00	0.00	

Source: IICA, based on data from the United Nations (COMTRADE) and FAO (FAOSTAT).

Share of Imports in the Domestic Caloric Supply (%)

	2000	2001	2002	2003	2004	2005	2006	2007	2008	2009	2010	2011
Caloric Dependence (%)	27.7	30.4		29.5	32.7	32.6		34.6	31.4		34.5	

Source: IICA, based on data from the United Nations (COMTRADE) and FAO (FAOSTAT).

International Monetary Reserves Measured in Months of Food Imports

	2000	2001	2002	2003	2004	2005	2006	2007	2008	2009	2010	2011
Months of Food Imports	139.0	123.8	132.0	132.9	135.4	135.8	154.3	178.0	142.7	198.0	200.8	174.0

Source: IICA, based on data from the United Nations (COMTRADE) y World Bank (WDI).

	2000	2001	2002	2003	2004	2005	2006	2007	2008	2009	2010	2011
Agricultural Deflator / GDP Deflator	100.0	97.7	92.4	91.9	90.6	90.9	87.8	93.3	100.1	102.6	119.6	114.2
Agricultural Deflator	100.0	98.7	93.6	96.7	103.1	110.3	115.0	130.3	150.6	153.3	198.9	204.0
GDP Deflator	100.0	101.0	101.2	105.1	113.8	121.3	130.9	139.7	150.4	149.3	166.3	178.6

Source: IICA, based on data from World Bank, WDI.

	2000	2001	2002	2003	2004	2005	2006	2007	2008	2009	2010	2011
AVA Deflator Adjusted by GDP Deflator (millions of US\$)	4,134.0	4,035.5	4,050.1	4,075.0	4,063.7	4,295.4	4,479.5	4,925.3	5,661.8	5,903.3	7,093.2	6,986.0

Source: IICA, based on data from World Bank, WDI.

External Terms of Trade (ETT) for Agriculture (2005=100)	2000	2001	2002	2003	2004	2005	2006	2007	2008	2009	2010	2011
ETT Agr	97.3	91.3	103.8	96.8	89.3	100.0	112.4	100.4	77.5	92.1	118.6	99.5

Source: IICA, based on data from the United Nations, COMTRADE.

External Terms of Trade (2005=100)	2000	2001	2002	2003	2004	2005	2006	2007	2008	2009	2010	2011
Terms of trade for goods and services	86.2	82.0	84.4	86.8	92.9	100.0	124.3	129.2	114.9	109.6	127.4	142.6

Source: World Bank, WDI.