

Macro and Socioeconomic Indicators

GDP (millions of US\$)	2000	2001	2002	2003	2004	2005	2006	2007	2008	2009	2010	2011
PIB (constant)	397	406	422	435	463	473	518	535	531	519	510	510
PIB (current)	397	431	463	482	523	551	611	685	699	672	675	688
National Income (millions of US\$)												
National Income (constant)	Data not available											
National Income (current)	Data not available											
Agricultural Production												
AVA (millions of current \$)	29	27	29	27	27	30	32	37	39	41	39	
AVA Share of GDP (%)	8.54	7.24	7.34	6.40	6.00	6.28	6.15	6.30	6.66	7.28	6.88	
Annual Variation of the CPI (inflation)	0.17	0.90	1.86	0.21	2.96	3.73	3.05	6.92	10.07	0.42	1.48	3.95
Population												
Total Population	107,891	107,987	108,150	108,354	108,566	108,755	108,918	109,060	109,178	109,269	109,000	109,365
Share of Women in the Total Population (%)	49.65	49.61	49.58	49.55	49.53	49.51	49.50	49.50	49.50	49.51	49.51	49.52
Rural Population	59,987	59,717	59,483	59,270	59,060	58,836	58,511	58,173	57,821	57,454	55,679	
Rural Population as a Percentage of the Total Population	55.60	55.30	55.00	54.70	54.40	54.10	53.72	53.34	52.96	52.58	51.08	
Rural Agricultural Employment (%)	Data not available											
Poverty and Extreme Poverty (total and rural)												
Poverty (%)	Data not available											
Rural Poverty (%)	Data not available											
Total Extreme Poverty (%)	Data not available											
Rural Extreme Poverty (%)	Data not available											
GINI Coefficient												
National	Data not available											
Rural	Data not available											

Source: World Bank (WDI) except for national income, poverty and extreme poverty, Gini Coefficient taken from ECLAC (CEPALSTAT).

Trade Indicators

Top Agricultural Exports (2011)	Share of Total Agricultural Exports (%)	Value (millions of US\$)
Wheat or meslin flour	37.66%	10.31
Manioc, rrowroot, salep etc, fresh, dried, sago pith	15.75%	4.31
Rice	15.11%	4.14
Animal feed preparations, nes	10.29%	2.82
Waters, non-alcoholic sweetened or flavoured beverages	6.26%	1.71

Source: IICA, based on data from the United Nations , COMTRADE.

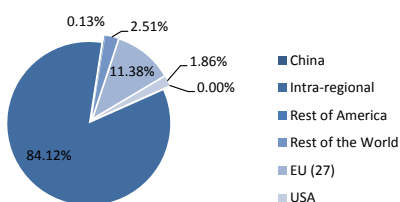
Top Agricultural Imports (2011)	Share of Total Agricultural Imports (%)	Value (millions of US\$)
Meat, edible offal of domestic poultry	11.64%	10.87
Wheat and meslin	11.05%	10.33
Food preparations, nes	7.03%	6.57
Waters, non-alcoholic sweetened or flavoured beverages	5.15%	4.81
Rice	5.08%	4.75

Source: IICA, based on data from the United Nations , COMTRADE.

RCA of the Top Agricultural Exports	2000	2001	2002	2003	2004	2005	2006	2007	2008	2009	2010	2011
Wheat or meslin flour	4.412	5.640	5.607	4.320	6.000	5.945	5.428	6.380	5.259	10.062	10.208	10.518
Manioc, rrowroot, salep etc, fresh, dried, sago pith	10.469	8.669	11.675	10.640	9.290	7.736	8.692	9.255	9.644	9.911	10.187	10.450
Rice	1.092	1.720	1.963	2.214	1.637	2.367	3.212	1.620	1.575	1.610	2.018	1.913
Animal feed preparations, nes	2.936	2.414	2.553	2.760	3.058	3.523	3.975	3.439	3.615	3.217	3.462	3.772
Waters, non-alcoholic sweetened or flavoured beverages	1.455	1.420	1.271	1.321	1.367	1.042	1.132	1.073	1.164	1.731	1.617	1.250

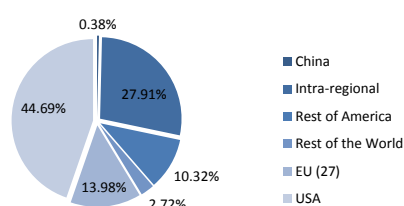
Source: IICA, based on data from the United Nations , COMTRADE.

Agrifood - Top Export Partners



Source: IICA, based on data from the United Nations , COMTRADE.

Agrifood - Top Import Partners



Source: IICA, based on data from the United Nations , COMTRADE.

	2000	2001	2002	2003	2004	2005	2006	2007	2008	2009	2010	2011
Agricultural Trade Balance (US\$ millions)	-5.13	-8.64	-11.75	-16.23	-20.90	-22.36	-26.11	-40.24	-55.43	-47.01	-55.86	-66.02
Share of Agricultural Exports as Percentage of the Total Exports of Goods (%)	75.97	78.31	84.02	73.43	80.86	74.80	77.13	66.13	61.74	65.97	69.95	71.26
Total Trade Openness Index	53.38	53.61	46.90	49.58	50.11	50.83	50.64	54.68	60.84	56.90	62.39	61.32
Total Trade and Agricultural Openness Index	278.51	290.62	264.79	271.04	295.00	272.06	263.70	280.60	305.60	272.96	293.37	

Source: IICA, based on data from the United Nations , COMTRADE.

Production Indicators

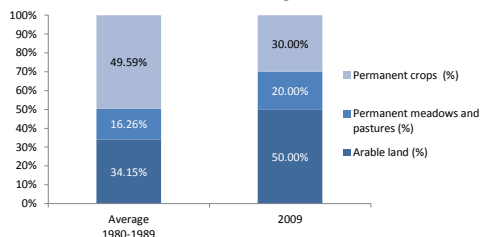
Agricultural Area	Promedio 1980-1989	2009
Agricultural Area (km2)	123.0	100.0
Agricultural Area per Capita (m2)	1,183.5	915.2

Source: FAO, FAOSTAT.

Forests and Woodland and Forest Cover in relation to the Total Area	1990	2009
Forests area (km2)	253	266
Forest area in relation to Total Area (%)	65%	68%

Source: FAO, FAOSTAT.

Distribution of the Total Agricultural Area



Top Crops (Hectares)	Average 2000-2010	Share of Total Number of Hectares Harvested
Bananas	4,900.0	33.49%
Sweet potatoes	1,331.8	9.10%
Roots and tubers, nes	1,159.1	7.92%
Coconuts	1,121.4	7.66%
Sugar cane	781.8	5.34%

Source: IICA, based on data from FAO, FAOSTAT.

Agricultural Labor Productivity	2000	2001	2002	2003	2004	2005	2006	2007	2008	2009	2010	2011
AVA per worker (constant 2000 US\$)	2,676.46	2,471.44	2,663.44	2,603.78	2,468.30	2,370.90	2,542.31	2,820.78	2,698.42	2,870.93	2,688.58	

Source: World Bank, WDI.

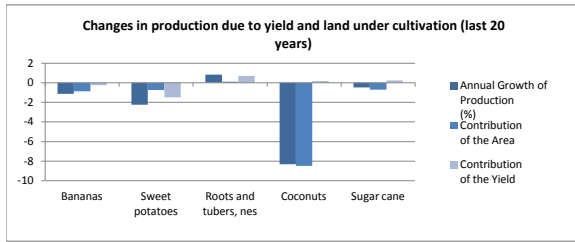
Economic Yield per Hectare (constant US\$)	2000	2001	2002	2003	2004	2005	2006	2007	2008	2009	2010	2011
AVA Deflated / Hectare Harvested	2,440.41	1,982.73	1,945.20	1,739.18	1,782.60	1,795.47	1,807.82	1,797.94	1,848.64	1,853.45	1,806.33	

Source: IICA, based on data from FAO (FAOSTAT) and World Bank (WDI).

Yield of Principal Crops based on Hectares Planted (tons per hectare)

Top Crops	1990-1995	2005-2010
Bananas	11.03	10.55
Sweet potatoes	1.66	1.29
Roots and tubers, nes	7.76	8.63
Coconuts	3.61	3.66
Sugar cane	24.13	25.00

Source: IICA, based on data from FAO (FAOSTAT).



Agricultural area irrigated in relation to the Total Agricultural Area	2000	2001	2002	2003	2004	2005	2006	2007	2008	2009	2010	2011
Irrigated Area (%)	10.00%	10.00%	10.00%	10.00%	10.00%	10.00%	10.00%	10.00%	10.00%	10.00%	10.00%	10.00%

Source: ECLAC, CEPALSTAT.

Food Security Indicators

Prevalence of Undernourishment

	1995-1997	2006-2008
Prevalence of Undernourishment (% of total population)	16	5

Source: FAO, FAOSTAT.

Net Food Exports	2000	2001	2002	2003	2004	2005	2006	2007	2008	2009	2010	2011
Net Food Exports (US\$ millions)	-5	-9	-12	-16	-20	-23	-26	-40	-55	-46	-54	-65

Source: IICA, based on data from the United Nations , COMTRADE.

Consumer Price Index (CPI) and Food CPI (base year 2005 = 100)	2000	2001	2002	2003	2004	2005	2006	2007	2008	2009	2010	2011
CPI of Food												
CPI of Basic Basket												

Source: ECLAC, CEPALSTAT.

Domestic Food Supply per Capita (kg per year)

	2000	2001	2002	2003	2004	2005	2006	2007	2008	2009	2010	2011
Vegetable oils	6.57		9.47	9.87		10.94	11.10		13.08	11.90	10.26	
Meat			73.89		74.18	72.31					75.55	
Cereals		129.52	178.62			189.59	155.26	266.97	349.92	234.28	234.02	
Fruits	56.88	132.73	152.50	276.32	203.37	275.13	312.34	314.74	356.31	399.61	538.68	
Vegetables	47.68	53.76	55.63	64.14	65.57	68.23	68.12	67.50	63.82	65.87	54.16	
Milk		18.46	19.28	17.84		15.88				17.03		
Roots and tubers	58.74	88.96	82.88	86.47	92.42	85.94	93.01	96.55	86.22	92.58	128.66	

Source: IICA, based on data from the United Nations (COMTRADE), FAO (FAOSTAT) and World Bank (WDI).

Share of Imports in the Domestic Food Supply (%)

	2000	2001	2002	2003	2004	2005	2006	2007	2008	2009	2010	2011
Vegetable oils	76.34		58.86	55.68		59.50	59.44		61.24	57.34	51.04	
Meat			85.05		86.55	86.37					83.57	
Cereals		95.57	96.77			96.99	95.27	97.70	98.17	97.38	97.82	
Fruits	1.24	0.73	0.66	0.39	0.60	0.69	0.77	0.65	0.53	0.41	0.41	
Vegetables	17.45	15.29	13.26	12.57	11.08	13.34	15.30	14.42	11.26	10.91	17.23	
Milk		30.80	30.83	38.86		36.33				27.78		
Roots and tubers	18.70	15.17	13.04	13.24	11.78	12.96	12.70	11.17	8.96	6.18	5.16	

Source: IICA, based on data from the United Nations (COMTRADE) and FAO (FAOSTAT).

Share of Imports in the Domestic Caloric Supply (%)

	2000	2001	2002	2003	2004	2005	2006	2007	2008	2009	2010	2011
Caloric Dependence (%)			75.7			72.2						

Source: IICA, based on data from the United Nations (COMTRADE) and FAO (FAOSTAT).

International Monetary Reserves Measured in Months of Food Imports

	2000	2001	2002	2003	2004	2005	2006	2007	2008	2009	2010	2011
Months of Food Imports	15.6	17.5	14.7	14.5	18.6	16.5	17.5	15.0	11.7	13.7	16.7	12

Source: IICA, based on data from the United Nations (COMTRADE) y World Bank (WDI).

	2000	2001	2002	2003	2004	2005	2006	2007	2008	2009	2010	2011
Agricultural Deflator / GDP Deflator	100.0	93.7	91.4	83.8	88.7	99.2	97.7	92.7	100.5	100.1	99.2	
Agricultural Deflator	100.0	99.4	100.3	93.0	100.0	115.6	115.1	118.7	132.2	129.6	131.3	
GDP Deflator	100.0	106.1	109.7	110.9	112.7	116.5	117.9	128.1	131.6	129.5	132.4	134.9

Source: IICA, based on data from World Bank, WDI.

	2000	2001	2002	2003	2004	2005	2006	2007	2008	2009	2010	2011
AVA Deflator Adjusted by GDP Deflator (millions of US\$)	29.4	25.5	26.8	24.0	24.1	25.9	27.3	28.8	29.8	31.6	29.3	

Source: IICA, based on data from World Bank, WDI.

External Terms of Trade (ETT) for Agriculture (2005=100)	2000	2001	2002	2003	2004	2005	2006	2007	2008	2009	2010	2011
ETT Agr	112.2	99.2	107.8	113.8	103.8	100.0	87.2	88.2	77.4	86.9	83.3	72.3

Source: IICA, based on data from the United Nations, COMTRADE.

External Terms of Trade (2005=100)	2000	2001	2002	2003	2004	2005	2006	2007	2008	2009	2010	2011
Terms of trade for goods and services												

Source: World Bank, WDI.