

Macro and Socioeconomic Indicators

GDP (millions of US\$)	2000	2001	2002	2003	2004	2005	2006	2007	2008	2009	2010	2011
PIB (constant)	7,106	7,299	7,573	7,917	8,411	8,920	9,506	10,094	10,521	10,297	10,582	10,942
PIB (current)	7,106	7,567	7,776	8,234	8,871	9,714	10,877	12,316	13,836	14,123	15,344	17,259
National Income (millions of US\$)												
National Income (constant)	8,579	8,882	9,202	9,444	10,042	11,193	11,948	12,698	12,752	12,937	13,233	
National Income (current)	7,510	8,110	8,405	8,863	9,690	11,193	12,831	14,637	16,335	16,285	17,563	
Agricultural Production												
AVA (millions of current \$)	1,021	996	947	956	1,080	1,211	1,290	1,467	1,681	1,553	1,779	1,970
AVA Share of GDP (%)	15.88	14.59	13.45	12.76	13.36	13.65	12.98	13.01	13.11	11.88	12.52	12.40
Annual Variation of the CPI (inflation)	11.05	9.67	7.70	7.67	8.11	8.81	5.58	6.94	11.41	5.49	4.70	6.76
Population												
Total Population	6,218,151	6,347,272	6,477,525	6,609,337	6,743,128	6,879,243	7,017,769	7,158,819	7,302,742	7,449,923	7,600,000	7,754,687
Share of Women in the Total Population (%)	50.06	50.08	50.11	50.13	50.14	50.14	50.13	50.10	50.08	50.05	50.03	50.01
Rural Population	3,457,292	3,502,425	3,547,093	3,591,514	3,635,895	3,680,395	3,722,225	3,764,107	3,806,189	3,848,630	3,680,148	
Rural Population as a Percentage of the Total Population	55.60	55.18	54.76	54.34	53.92	53.50	53.04	52.58	52.12	51.66	48.42	
Rural Agricultural Employment (%)			66.40	63.80			61.90	58.00		60.50	61.50	
Poverty and Extreme Poverty (total and rural)												
Poverty (%)			77.30	74.80			71.50	68.90		65.70	67.40	
Rural Poverty (%)			86.10	84.80			81.50	78.80		75.10	76.50	
Total Extreme Poverty (%)			54.40	53.90			49.30	45.60		41.80	42.80	
Rural Extreme Poverty (%)			69.50	69.40			65.30	61.70		56.20	56.80	
GINI Coefficient												
National			0.588	0.587			0.605	0.580			0.567	
Rural			0.519	0.508			0.601	0.571			0.560	

Source: World Bank (WDI) except for national income, poverty and extreme poverty, Gini Coefficient taken from ECLAC (CEPALSTAT).

Trade Indicators

Top Agricultural Exports (2009)	Share of Total Agricultural Exports (%)	Value (millions of US\$)
Coffee, coffee husks and skins and coffee substitutes	38.03%	515.78
Bananas, including plantains, fresh or dried	13.30%	180.35
Palm oil and its fractions, not chemically modified	9.13%	123.81
Crustaceans	8.74%	118.61
Cigars, cigarettes etc, tobacco or tobacco substitute	5.72%	77.56

Source: IICA, based on data from the United Nations , COMTRADE.

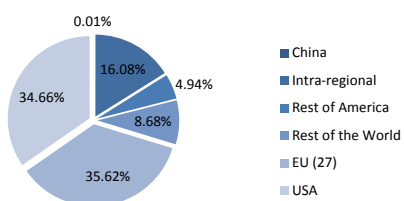
Top Agricultural Imports (2009)	Share of Total Agricultural Imports (%)	Value (millions of US\$)
Maize (corn)	7.75%	90.48
Food preparations, nes	6.45%	75.27
Baked bread, pastry, wafers, rice paper, biscuits, etc	5.44%	63.55
Soya-bean oil-cake and other solid residues	5.18%	60.54
Rice	5.11%	59.71

Source: IICA, based on data from the United Nations , COMTRADE.

RCA of the Top Agricultural Exports	2000	2001	2002	2003	2004	2005	2006	2007	2008	2009	2010	2011
Coffee, coffee husks and skins and coffee substitutes	8.294	6.744	8.677	8.566	8.952	9.280	8.873	8.945		8.601		
Bananas, including plantains, fresh or dried	4.045	3.833	7.278	8.028	9.152	7.053	5.482	5.385		4.928		
Palm oil and its fractions, not chemically modified	6.093	5.922	4.923	5.244	5.070	5.456	2.697	5.418		4.239		
Crustaceans	3.377	3.059	3.531	3.619	3.681	3.745	6.283	4.453		4.095		
Cigars, cigarettes etc, tobacco or tobacco substitute	3.197	3.352	3.700	3.642	4.057	3.872	3.159	3.768		3.672		

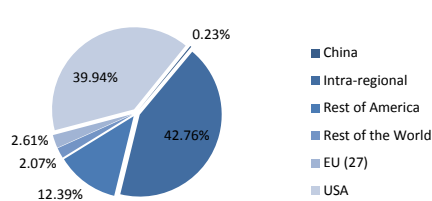
Source: IICA, based on data from the United Nations , COMTRADE.

Agrifood - Top Export Partners



Source: IICA, based on data from the United Nations , COMTRADE.

Agrifood - Top Import Partners



Source: IICA, based on data from the United Nations , COMTRADE.

	2000	2001	2002	2003	2004	2005	2006	2007	2008	2009	2010	2011
Agricultural Trade Balance (US\$ millions)	171.30	395.24	90.21	103.35	168.82	134.88	391.72	255.63		188.63		
Share of Agricultural Exports as Percentage of the Total Exports of Goods (%)	68.51	69.06	61.36	61.09	62.01	63.90	57.81	52.48		51.61		
Total Trade Openness Index	50.07	53.11	49.39	50.21	55.01	58.82	62.52	72.44		60.76		
Total Trade and Agricultural Openness Index	127.54	144.48	115.54	115.92	121.57	125.41	138.13	153.69		162.51		

Source: IICA, based on data from the United Nations , COMTRADE.

Production Indicators

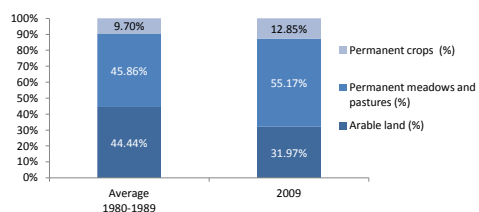
Agricultural Area	Promedio 1980-1989	2009
Agricultural Area (km2)	32,841.0	31,900.0
Agricultural Area per Capita (m2)	7,867.4	4,281.9

Source: FAO, FAOSTAT.

Forests and Woodland and Forest Cover in relation to the Total Area	1990	2009
Forests area (km2)	81,360	53,120
Forest area in relation to Total Area (%)	72%	47%

Source: FAO, FAOSTAT.

Distribution of the Total Agricultural Area



Top Crops (Hectares)	Average 2000-2010	Share of Total Number of Hectares Harvested
Maize	351,269.1	34.52%
Coffee, green	234,461.7	23.04%
Beans, dry	104,486.9	10.27%
Oil palm fruit	73,181.8	7.19%
Sugar cane	68,723.7	6.75%

Source: IICA, based on data from FAO, FAOSTAT.

Agricultural Labor Productivity	2000	2001	2002	2003	2004	2005	2006	2007	2008	2009	2010	2011
AVA per worker (constant 2000 US\$)	1,389.45	1,446.47	1,535.02	1,595.80	1,738.40	1,723.58	1,843.35	1,968.56	2,018.47	1,996.16	2,041.26	

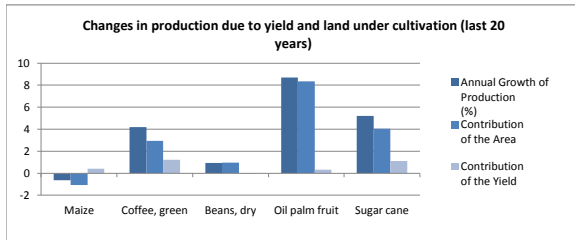
Source: World Bank, WDI.

Economic Yield per Hectare (constant US\$)	2000	2001	2002	2003	2004	2005	2006	2007	2008	2009	2010	2011
AVA Deflated / Hectare Harvested	1,051.40	1,033.65	920.54	942.94	1,034.13	1,104.81	1,129.07	1,152.04	1,273.66	1,093.67	990.43	

Source: IICA, based on data from FAO (FAOSTAT) and World Bank (WDI).

Yield of Principal Crops based on Hectares Planted (tons per hectare)	Top Crops	
	1990-1995	2005-2010
Maize	1.42	1.55
Coffee, green	0.74	0.91
Beans, dry	0.67	0.72
Oil palm fruit	14.40	15.68
Sugar cane	69.87	85.14

Source: IICA, based on data from FAO (FAOSTAT).



Agricultural area irrigated in relation to the Total Agricultural Area	2000	2001	2002	2003	2004	2005	2006	2007	2008	2009	2010	2011
Irrigated Area (%)	2.73%	2.72%	2.64%	2.54%	2.55%	2.54%	2.53%	2.53%	2.51%	2.51%		

Source: ECLAC, CEPALSTAT.

Food Security Indicators

Prevalence of Undernourishment

	1995-1997	2006-2008
Prevalence of Undernourishment (% of total population)	16	12

Source: FAO, FAOSTAT.

Net Food Exports	2000	2001	2002	2003	2004	2005	2006	2007	2008	2009	2010	2011
Net Food Exports (US\$ millions)	310	482	147	163	240	222	448	309		261		

Source: IICA, based on data from the United Nations , COMTRADE.

Consumer Price Index (CPI) and Food CPI (base year 2005 = 100)	2000	2001	2002	2003	2004	2005	2006	2007	2008	2009	2010	2011
CPI of Food	72.63	79.00	82.13	85.11	90.91	100.00	104.31	114.28	133.76	138.61	141.15	149.68
CPI of Basic Basket	66.84	73.31	78.95	85.01	91.90	100.00	105.58	112.90	125.78	132.69	138.91	148.08

Source: ECLAC, CEPALSTAT.

Domestic Food Supply per Capita (kg per year)

	2000	2001	2002	2003	2004	2005	2006	2007	2008	2009	2010	2011
Vegetable oils	29.25	39.40	32.03	33.58	37.76	54.74	68.13	55.20		58.12		
Meat	24.96	20.97	27.53	29.96	31.42	33.63	32.21	33.20		31.86		
Cereals	111.83	96.53	166.32	139.75	138.04	162.95	182.09	168.09		188.77		
Fruits	132.93	141.18	109.10	117.94	115.80	140.59	129.56	73.31		74.62		
Vegetables	38.13	53.76	35.64	50.30	53.37	55.06	61.29	59.89		55.39		
Milk	92.43	93.50	90.73	96.01	96.46	96.49	107.72	108.25		94.80		
Roots and tubers	5.26	5.82	4.70	5.06	6.67	7.58	7.19	6.98		8.07		

Source: IICA, based on data from the United Nations (COMTRADE), FAO (FAOSTAT) and World Bank (WDI).

Share of Imports in the Domestic Food Supply (%)

	2000	2001	2002	2003	2004	2005	2006	2007	2008	2009	2010	2011
Vegetable oils	2.43	0.14	3.39	3.86	2.45	1.80	7.96	3.64		3.49		
Meat	9.30	0.74	5.04	5.62	5.46	7.72	9.20	9.52		10.16		
Cereals	12.86	1.69	46.29	35.89	44.59	51.13	53.63	37.48		50.09		
Fruits	1.10	0.11	2.55	1.60	1.17	1.80	4.51	8.57		17.69		
Vegetables	1.46	0.11	4.21	2.99	2.16	5.05	4.13	4.03		7.49		
Milk	0.78	0.04	0.44	0.60	0.69	0.58	0.95	0.45		0.83		
Roots and tubers	1.07	0.21	9.59	6.61	8.06	13.66	14.08	6.24		18.93		

Source: IICA, based on data from the United Nations (COMTRADE) and FAO (FAOSTAT).

Share of Imports in the Domestic Caloric Supply (%)

	2000	2001	2002	2003	2004	2005	2006	2007	2008	2009	2010	2011
Caloric Dependence (%)	7.20	0.72	26.52	19.02	21.80	23.41	26.72	19.18		26.32		

Source: IICA, based on data from the United Nations (COMTRADE) and FAO (FAOSTAT).

International Monetary Reserves Measured in Months of Food Imports

	2000	2001	2002	2003	2004	2005	2006	2007	2008	2009	2010	2011
Months of Food Imports	38.2	40.6	45.0	42.7	52.3	49.8	57.9	36.9		26.1		

Source: IICA, based on data from the United Nations (COMTRADE) y World Bank (WDI).

	2000	2001	2002	2003	2004	2005	2006	2007	2008	2009	2010	2011
Agricultural Deflator / GDP Deflator	100.0	92.1	84.7	82.4	85.6	95.2	89.7	90.6	94.5	84.9	90.4	90.4
Agricultural Deflator	100.0	95.5	86.9	85.7	90.3	103.7	102.6	110.6	124.3	116.5	131.1	142.6
GDP Deflator	100.0	103.7	102.7	104.0	105.5	108.9	114.4	122.0	131.5	137.2	145.0	157.7

Source: IICA, based on data from World Bank, WDI.

	2000	2001	2002	2003	2004	2005	2006	2007	2008	2009	2010	2011
AVA Deflator Adjusted by GDP Deflator (millions of US\$)	1,021.2	961.0	922.7	919.5	1,023.7	1,112.4	1,127.0	1,202.3	1,278.3	1,132.4	1,227.0	1,249

Source: IICA, based on data from World Bank, WDI.

External Terms of Trade (ETT) for Agriculture (2005=100)	2000	2001	2002	2003	2004	2005	2006	2007	2008	2009	2010	2011
ETT Agr	102.12		87.14	89.61		100.00	90.14	98.52		105.90		

Source: IICA, based on data from the United Nations, COMTRADE.

External Terms of Trade (2005=100)	2000	2001	2002	2003	2004	2005	2006	2007	2008	2009	2010	2011
Terms of trade for goods and services	112.7	107.9	105.3	101.0	99.3	100.0	96.2	94.7	89.7	97.0	98.9	106.1

Source: World Bank, WDI.