

## Macro and Socioeconomic Indicators

GDP (millions of US\$)	2000	2001	2002	2003	2004	2005	2006	2007	2008	2009	2010	2011
PIB (constant)	3,936	4,053	4,083	4,186	4,409	4,598	4,788	4,963	5,100	5,025	5,250	5,494
PIB (current)	3,936	4,103	4,026	4,102	4,467	4,873	5,230	5,662	6,372	6,214	6,591	7,297
<b>National Income (millions of US\$)</b>												
National Income (constant)	4,529	4,680	4,759	4,937	5,255	5,530	5,775	5,972	5,962	6,147	6,371	
National Income (current)	4,053	4,355	4,310	4,487	4,989	5,530	6,020	6,524	7,272	7,074	7,446	
<b>Agricultural Production</b>												
AVA (millions of current \$)	728	718	688	667	742	814	878	904	1,131	1,096	1,202	1,372
AVA Share of GDP (%)	20.89	19.53	19.15	18.33	18.74	18.99	19.20	18.28	20.17	19.89	20.77	21.50
<b>Annual Variation of the CPI (inflation)</b>												
	7.07	5.99	3.75	5.30	8.47	9.60	9.14	11.13	19.83	3.69	5.45	8.08
<b>Population</b>												
Total Population	5,073,704	5,148,635	5,219,724	5,288,271	5,356,012	5,424,336	5,493,527	5,563,654	5,635,577	5,710,230	5,789,000	5,869,859
Share of Women in the Total Population (%)	50.23	50.25	50.27	50.29	50.32	50.35	50.39	50.43	50.47	50.50	50.53	50.54
Rural Population	2,298,388	2,319,975	2,339,480	2,357,511	2,374,856	2,392,132	2,407,264	2,422,415	2,437,951	2,454,257	2,474,682	
Rural Population as a Percentage of the Total Population	45.30	45.06	44.82	44.58	44.34	44.10	43.82	43.54	43.26	42.98	42.75	
Rural Agricultural Employment (%)		64.40				68.50						
<b>Poverty and Extreme Poverty (total and rural)</b>												
Poverty (%)		69.40				61.90						
Rural Poverty (%)		77.10				71.50						
Total Extreme Poverty (%)		42.50				31.90						
Rural Extreme Poverty (%)		55.20				46.10						
<b>GINI Coefficient</b>												
National		0.579				0.532						
Rural		0.507				0.497						

Source: World Bank (WDI) except for national income, poverty and extreme poverty, Gini Coefficient taken from ECLAC (CEPLSTAT).

## Trade Indicators

Top Agricultural Exports (2011)	Share of Total Agricultural Exports (%)	Value (millions of US\$)
Coffee, coffee husks and skins and coffee substitutes	24.90%	431.57
Meat of bovine animals, frozen	18.69%	324.08
Solid cane or beet sugar and chemically pure sucrose	9.02%	156.33
Crustaceans	6.65%	115.20
Meat of bovine animals, fresh or chilled	5.94%	102.94

Source: IICA, based on data from the United Nations , COMTRADE.

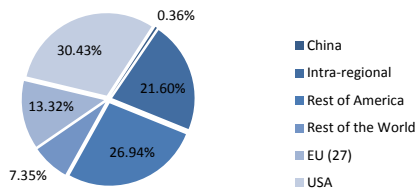
Top Agricultural Imports (2011)	Share of Total Agricultural Imports (%)	Value (millions of US\$)
Soya-bean oil, fractions, not chemically modified	7.35%	64.81
Wheat and meslin	6.37%	56.16
Palm oil and its fractions, not chemically modified	6.11%	53.93
Food preparations, nes	6.01%	53.02
Waters, non-alcoholic sweetened or flavoured beverages	5.72%	50.48

Source: IICA, based on data from the United Nations , COMTRADE.

RCA of the Top Agricultural Exports	2000	2001	2002	2003	2004	2005	2006	2007	2008	2009	2010	2011
Coffee, coffee husks and skins and coffee substitutes	5.890	8.441	5.023	4.737	8.005	4.983	5.662	5.327	5.720	5.385	5.892	5.611
Meat of bovine animals, frozen	5.498	5.885	5.948	5.540	8.101	7.906	7.280	8.065	7.412	7.576	7.537	7.300
Solid cane or beet sugar and chemically pure sucrose	6.892	8.644	8.500	7.976	8.352	8.378	8.074	7.994	6.987	8.080	8.929	9.403
Crustaceans	4.932	3.830	3.834	6.963	7.733	9.436	9.422	7.265	6.260	8.094	9.537	7.108
Meat of bovine animals, fresh or chilled	6.884	6.523	5.961	5.486	7.322	5.822	6.946	8.091	7.608	7.218	7.864	7.178

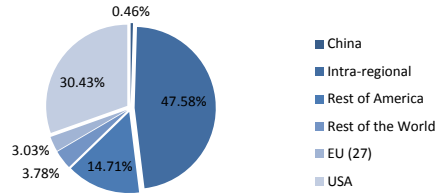
Source: IICA, based on data from the United Nations , COMTRADE.

**Agrifood - Top Export Partners**



Source: IICA, based on data from the United Nations , COMTRADE.

**Agrifood - Top Import Partners**



Source: IICA, based on data from the United Nations , COMTRADE.

	2000	2001	2002	2003	2004	2005	2006	2007	2008	2009	2010	2011
<b>Agricultural Trade Balance (US\$ millions)</b>	260.58	123.85	159.75	200.36	284.08	372.90	287.15	399.50	597.94	550.11	751.45	851.60
<b>Share of Agricultural Exports as Percentage of the Total Exports of Goods (%)</b>	85.65	78.81	70.24	79.84	80.87	82.47	80.75	81.34	49.79	84.10	78.31	76.00
<b>Total Trade Openness Index</b>	59.70	56.20	60.53	61.18	65.61	69.81	66.90	83.58	114.28	78.40	91.62	100.42
<b>Total Trade and Agricultural Openness Index</b>	112.34	99.62	106.33	114.84	120.27	129.61	106.81	170.87	170.56	163.68	178.23	190.67

Source: IICA, based on data from the United Nations , COMTRADE.

## Production Indicators

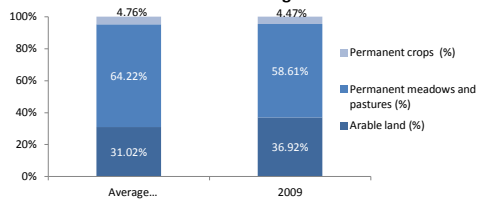
Agricultural Area	Promedio 1980-1989	2009
Agricultural Area (km2)	38,648.0	51,460.0
Agricultural Area per Capita (m2)	10,604.4	9,011.9

Source: FAO, FAOSTAT.

Forests and Woodland and Forest Cover in relation to the Total Area	1990	2009
Forests area (km2)	45,140	31,840
Forest area in relation to Total Area (%)	35%	24%

Source: FAO, FAOSTAT.

**Distribution of the Total Agricultural Area**



Top Crops (Hectares)	Average 2000-2010	Share of Total Number of Hectares Harvested
Maize	347,211.7	34.91%
Beans, dry	241,589.9	24.29%
Coffee, dry	116,227.5	11.69%
Rice, paddy	83,701.2	8.42%
Sugar cane	48,702.6	4.90%

Source: IICA, based on data from FAO, FAOSTAT.

Agricultural Labor Productivity	2000	2001	2002	2003	2004	2005	2006	2007	2008	2009	2010	2011
<b>AVA per worker (constant 2000 US\$)</b>	1,865.94	1,935.84	1,946.00	2,004.83	2,141.88	2,248.53	2,352.67	2,363.69	2,548.23	2,579.93	2,778.91	

Source: World Bank, WDI.

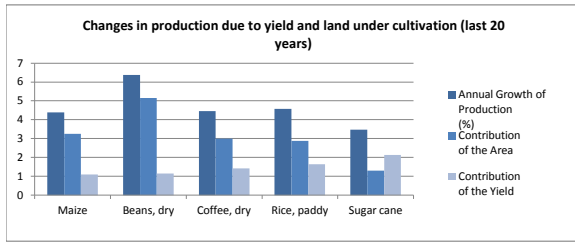
Economic Yield per Hectare (constant US\$)	2000	2001	2002	2003	2004	2005	2006	2007	2008	2009	2010	2011
<b>AVA Deflated / Hectare Harvested</b>	773.45	771.74	685.66	624.86	768.36	695.45	822.44	787.35	926.48	897.43	991.05	

Source: IICA, based on data from FAO (FAOSTAT) and World Bank (WDI).

**Yield of Principal Crops based on Hectares Planted (tons per hectare)**

Top Crops	1990-1995	2005-2010
Maize	1.22	1.41
Beans, dry	0.64	0.76
Coffee, dry	0.56	0.71
Rice, paddy	3.22	4.10
Sugar cane	63.70	86.29

Source: IICA, based on data from FAO (FAOSTAT).



Agricultural area irrigated in relation to the Total Agricultural Area	2000	2001	2002	2003	2004	2005	2006	2007	2008	2009	2010	2011
Irrigated Area (%)	1.20%	1.19%	1.17%	1.15%	1.17%	1.15%	1.17%	1.17%	1.19%	1.19%		

Source: ECLAC, CEPALSTAT.

## Food Security Indicators

### Prevalence of Undernourishment

	1995-1997	2006-2008
Prevalence of Undernourishment (% of total population)	38	19

Source: FAO, FAOSTAT.

Net Food Exports	2000	2001	2002	2003	2004	2005	2006	2007	2008	2009	2010	2011
Net Food Exports (US\$ millions)	252	118	144	184	253	332	277	383	538	564	777	888

Source: IICA, based on data from the United Nations , COMTRADE.

Consumer Price Index (CPI) and Food CPI (base year 2005 = 100)	2000	2001	2002	2003	2004	2005	2006	2007	2008	2009	2010	2011
CPI of Food	70.36	76.45	78.65	81.59	89.80	100.00	109.70	126.88	163.70	169.44	176.96	191.66
CPI of Basic Basket	71.79	77.07	80.15	84.28	91.39	100.00	110.00	121.73	145.58	150.00	158.82	171.06

Source: ECLAC, CEPALSTAT.

### Domestic Food Supply per Capita (kg per year)

	2000	2001	2002	2003	2004	2005	2006	2007	2008	2009	2010	2011
Vegetable oils	13.93	16.97	16.47	18.24	16.53	17.78	10.44	15.97	14.18	16.87	16.41	
Meat	21.01	22.82	22.58	24.46	26.82	27.68	32.54	34.01	34.79	35.86	40.54	
Cereals	189.52	174.90	216.17	214.67	174.17	202.17	212.78	221.68	201.50	215.34	225.71	
Fruits	33.00	34.36	30.43	30.80	29.06	26.88	29.98	27.46	34.98	24.08	16.81	
Vegetables	6.57	7.11	8.16	7.73	8.56	6.33	8.11	8.48	9.52	9.97	9.84	
Milk	110.94	104.34	104.34				121.22	124.34	126.94	127.78	125.73	
Roots and tubers	19.82	24.26	28.96	27.92	23.90	28.94	26.26	27.54	29.40	23.91	16.63	

Source: IICA, based on data from the United Nations (COMTRADE), FAO (FAOSTAT) and World Bank (WDI).

### Share of Imports in the Domestic Food Supply (%)

	2000	2001	2002	2003	2004	2005	2006	2007	2008	2009	2010	2011
Vegetable oils	64.22	71.15	75.61	76.74	73.41	75.64	60.73	73.49	77.08	74.13	82.27	
Meat	2.76	2.09	1.04	1.09	1.03	1.36	0.89	0.74	1.22	1.27	1.20	
Cereals	18.54	16.95	19.33	11.91	14.45	12.33	23.79	30.47	31.75	25.74	26.00	
Fruits	6.60	4.16	5.75	7.87	8.42	3.12	3.15	8.69	7.11	14.86	18.28	
Vegetables	46.19	46.81	46.84	48.91	55.27	63.22	58.04	70.78	58.63	62.99	70.46	
Milk	0.56	0.09	0.09				0.21	0.16	0.20	0.15	0.16	
Roots and tubers	22.35	13.00	9.58	7.77	10.31	7.44	7.95	5.51	5.43	3.47	5.40	

Source: IICA, based on data from the United Nations (COMTRADE) and FAO (FAOSTAT).

### Share of Imports in the Domestic Caloric Supply (%)

	2000	2001	2002	2003	2004	2005	2006	2007	2008	2009	2010	2011
Caloric Dependence (%)	22.9		25.3				23.8	31.9	32.5	29.0	30.1	

Source: IICA, based on data from the United Nations (COMTRADE) and FAO (FAOSTAT).

### International Monetary Reserves Measured in Months of Food Imports

	2000	2001	2002	2003	2004	2005	2006	2007	2008	2009	2010	2011
Months of Food Imports	24.1	17.8	22.0	24.2	29.4	28.4	37.8	25.8	23.0	34.3	35.4	29

Source: IICA, based on data from the United Nations (COMTRADE) y World Bank (WDI).

	2000	2001	2002	2003	2004	2005	2006	2007	2008	2009	2010	2011
Agricultural Deflator / GDP Deflator	100.0	94.9	93.7	89.6	91.2	92.1	93.4	92.0	98.7	96.7	98.2	103.3
Agricultural Deflator	100.0	96.1	92.4	87.8	92.4	97.6	102.0	105.0	123.3	119.6	123.2	137.2
GDP Deflator	100.0	101.2	98.6	98.0	101.3	106.0	109.2	114.1	125.0	123.7	125.5	132.8

Source: IICA, based on data from World Bank, WDI.

	2000	2001	2002	2003	2004	2005	2006	2007	2008	2009	2010	2011
AVA Deflator Adjusted by GDP Deflator (millions of US\$)	727.7	709.1	698.2	680.7	732.6	768.3	804.0	792.0	905.2	885.9	957.4	1,032.8

Source: IICA, based on data from World Bank, WDI.

External Terms of Trade (ETT) for Agriculture (2005=100)	2000	2001	2002	2003	2004	2005	2006	2007	2008	2009	2010	2011
ETT Agr	96.5	85.7	84.9	86.6	85.7	100.0	101.3	90.7	91.5	86.9	95.9	99.5

Source: IICA, based on data from the United Nations, COMTRADE.

External Terms of Trade (2005=100)	2000	2001	2002	2003	2004	2005	2006	2007	2008	2009	2010	2011
Terms of trade for goods and services	120.0	108.4	106.6	103.3	100.8	100.0	98.1	97.4	93.7	101.9	101.9	101.3

Source: World Bank, WDI.