

Macro and Socioeconomic Indicators

GDP (millions of US\$)	2000	2001	2002	2003	2004	2005	2006	2007	2008	2009	2010	2011	
PIB (constant)	284,204	271,674	242,076	263,469	287,259	313,626	340,178	369,615	394,595	397,950	434,406	472,935	
PIB (current)	284,204	268,697	102,040	129,597	153,129	183,193	214,066	260,769	326,677	307,082	368,711	445,989	
National Income (millions of US\$)													
National Income (constant)	159,098	151,163	131,254	145,640	159,545	176,375	195,758	215,635	235,847	234,360	253,721		
National Income (current)	277,197	261,529	95,091	122,124	144,407	176,375	208,577	256,863	321,086	302,490	359,975		
Agricultural Production													
AVA (millions of current \$)	13,300	12,276	10,415	13,385	14,760	15,956	16,604	22,500	29,474	21,276	33,830	37,033	
AVA Share of GDP (%)	4.97	4.81	10.68	10.99	10.41	9.40	8.39	9.39	9.84	7.50	10.00	9.09	
Annual Variation of the CPI (inflation)	-0.94	-1.07	25.87	13.44	4.42	9.64	10.90	8.83	8.58	6.28	10.78	9.47	
Population													
Total Population	36,930,709	37,302,116	37,657,340	38,001,251	38,340,778	38,681,174	39,023,850	39,368,066	39,714,298	40,062,470	40,412,000	40,764,561	
Share of Women in the Total Population (%)	51.02	51.04	51.05	51.06	51.07	51.08	51.08	51.08	51.08	51.08	51.08	51.08	
Rural Population	3,656,140	3,595,924	3,532,258	3,465,714	3,396,993	3,326,581	3,278,003	3,228,181	3,177,144	3,124,873	3,091,922		
Rural Population as a Percentage of the Total Population	9.90	9.64	9.38	9.12	8.86	8.60	8.40	8.20	8.00	7.80	7.65		
Rural Agricultural Employment (%)	Data not available												
Poverty and Extreme Poverty (total and rural)													
Poverty (%)			31.30			18.10	15.40	11.80			5.40		
Rural Poverty (%)													
Total Extreme Poverty (%)			12.10			5.80	4.30	3.40			1.40		
Rural Extreme Poverty (%)													
GINI Coefficient													
National	Data not available												
Rural	Data not available												

Source: World Bank (WDI) except for national income, poverty and extreme poverty, Gini Coefficient taken from ECLAC (CEPALSTAT).

Trade Indicators

Top Agricultural Exports (2011)	Share of Total Agricultural Exports (%)	Value (millions of US\$)
Soya-bean oil-cake and other solid residues	22.01%	9,906.72
Soya beans	12.12%	5,457.16
Soya-bean oil, fractions, not chemically modified	11.54%	5,196.66
Maize (corn)	10.04%	4,518.82
Wheat and meslin	5.57%	2,508.66

Source: IICA, based on data from the United Nations , COMTRADE.

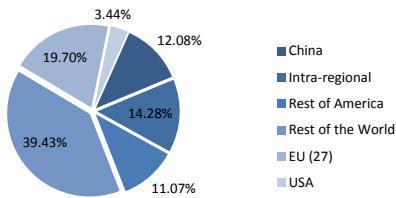
Top Agricultural Imports (2011)	Share of Total Agricultural Imports (%)	Value (millions of US\$)
Bananas, including plantains, fresh or dried	6.58%	143.70
Meat of swine, fresh, chilled or frozen	6.43%	140.33
Food preparations, nes	5.56%	121.38
Coffee, coffee husks and skins and coffee substitutes	5.19%	113.33
Prepared or preserved fish, fish eggs, caviar	4.87%	106.30

Source: IICA, based on data from the United Nations , COMTRADE.

RCA of the Top Agricultural Exports	2000	2001	2002	2003	2004	2005	2006	2007	2008	2009	2010	2011
Soya-bean oil-cake and other solid residues		11.714	9.067	9.861	9.898	10.118	10.325	9.388	9.212	8.648	10.796	10.819
Soya beans	2.946	2.988	2.325	2.693	2.333	2.660	2.279	1.682	1.332	1.429	9.193	6.997
Soya-bean oil, fractions, not chemically modified	12.896	12.753	9.379	12.322	15.715	10.515	14.701	15.126	11.131	14.613	13.852	12.092
Maize (corn)	4.388	4.628	4.172	4.923	5.370	5.355	4.957	4.849	5.009	4.491	4.841	5.148
Wheat and meslin	10.223	9.535	8.509	10.306	8.883	9.540	10.723	10.751	9.240	10.266	10.359	10.880

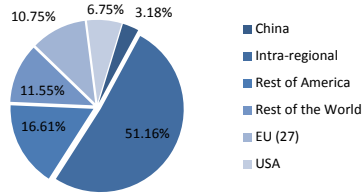
Source: IICA, based on data from the United Nations , COMTRADE.

Agrifood - Top Export Partners



Source: IICA, based on data from the United Nations, COMTRADE.

Agrifood - Top Import Partners



Source: IICA, based on data from the United Nations, COMTRADE.

	2000	2001	2002	2003	2004	2005	2006	2007	2008	2009	2010	2011
Agricultural Trade Balance (US\$ millions)	10,304.57	10,726.28	11,452.68	14,119.02	15,823.31	17,944.84	19,879.00	26,668.81	34,413.03	26,388.07	32,615.75	42,831.01
Share of Agricultural Exports as Percentage of the Total Exports of Goods (%)	44.62	45.28	46.59	49.72	48.45	47.22	45.23	51.22	53.28	50.42	50.45	53.62
Total Trade Openness Index	18.16	17.47	34.01	33.79	37.24	37.55	37.64	38.53	39.02	30.76	33.80	36.08
Total Trade and Agricultural Openness Index	99.25	108.92	120.05	116.94	119.79	124.94	133.19	135.42	136.41	139.83	106.79	127.45

Source: IICA, based on data from the United Nations, COMTRADE.

Production Indicators

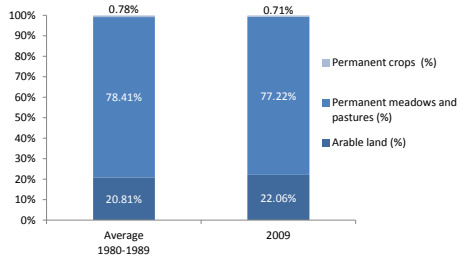
Agricultural Area	Average 1980-1989	2009
Agricultural Area (km ²)	1,281,219.0	1,405,000.0
Agricultural Area per Capita (m ²)	42,510.0	35,070.2

Source: FAO, FAOSTAT.

Forests and Woodland and Forest Cover in relation to the Total Area	1990	2009
Forests area (km ²)	347,930	296,398
Forest area in relation to Total Area (%)	13%	11%

Source: FAO, FAOSTAT.

Distribution of the Total Agricultural Area



Top Crops (Hectares)	Average 2000-2010	Share of Total Number of Hectares Harvested
Soya bean	13,963,645	49.75%
Wheat	5,440,152	19.38%
Maize	2,702,052	9.63%
Sunflower seed	2,171,049	7.73%
Sorghum	571,025	2.03%

Source: IICA, based on data from FAO, FAOSTAT.

Agricultural Labor Productivity	2000	2001	2002	2003	2004	2005	2006	2007	2008	2009	2010	2011
AVA per worker (constant 2000 US\$)	9,122.42	9,231.02	9,038.75	9,679.87	9,558.33	10,649.80	10,958.78	12,108.55	11,867.76	10,064.25	12,957.24	

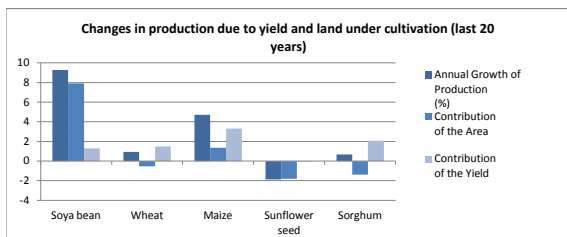
Source: World Bank, WDI.

Economic Yield per Hectare (constant US\$)	2000	2001	2002	2003	2004	2005	2006	2007	2008	2009	2010	2011
AVA Deflated / Hectare Harvested	519.02	479.31	974.02	1,042.71	985.04	1,001.46	914.61	1,028.84	1,155.05	980.42	1,261.40	

Source: IICA, based on data from FAO (FAOSTAT) and World Bank (WDI).

Yield of Principal Crops based on Hectares Planted (tons per hectare)	Top Crops	
	1990-1995	2005-2010
Soya bean	2.16	2.66
Wheat	2.09	2.67
Maize	4.19	6.79
Sunflower seed	1.65	1.63
Sorghum	3.45	4.67

Source: IICA, based on data from FAO (FAOSTAT).



Agricultural area irrigated in relation to the Total Agricultural Area	2000	2001	2002	2003	2004	2005	2006	2007	2008	2009	2010	2011
Irrigated Area (%)	1.22%	1.22%	1.22%	1.20%	1.19%	1.19%	1.18%	1.16%	1.16%	1.17%		

Source: ECLAC, CEPALSTAT.

Food Security Indicators

Prevalence of Undernourishment

	1995-1997	2006-2008
Prevalence of Undernourishment (% of total population)	<5	<5

Source: FAO, FAOSTAT.

Net Food Exports	2000	2001	2002	2003	2004	2005	2006	2007	2008	2009	2010	2011
Net Food Exports (US\$ millions)	7,659	7,841	8,429	10,457	11,761	13,600	14,934	20,033	26,131	17,184	23,299	31,284

Source: IICA, based on data from the United Nations, COMTRADE.

Consumer Price Index (CPI) and Food CPI (base year 2005 = 100)	2000	2001	2002	2003	2004	2005	2006	2007	2008	2009	2010	2011
CPI of Food	54.57	53.53	72.04	85.84	90.12	100.00	112.12	124.69	133.11	136.90	156.61	169.00
CPI of Basic Basket	61.83	61.17	77.00	87.35	91.21	100.00	110.90	120.69	131.05	139.27	153.84	167.62

Source: ECLAC, CEPALSTAT.

Domestic Food Supply per Capita (kg per year)

	2000	2001	2002	2003	2004	2005	2006	2007	2008	2009	2010	2011
Vegetable oils	21.20	11.35	22.07	20.74	14.63	23.67	20.20	24.81	44.06	45.43	66.42	
Meat	111.88	102.35	93.23	97.94	108.94	114.01	115.36	120.80	120.81	128.59	110.35	
Cereals	428.32	358.91	335.29	414.30	385.46	321.27	346.48	455.78	263.44	264.40	552.48	
Fruits	186.78	203.77	179.74	180.14	183.73	190.74	192.17	178.29	176.77	166.36	167.50	
Vegetables	76.79	75.01	77.51	76.50	75.48	78.92	72.49	74.44	73.97	73.74	70.79	
Milk	272.84	261.34	232.68	216.19	211.58	255.53	267.97	249.00	258.95	257.90	258.95	
Roots and tubers	71.01	78.32	71.55	66.68	65.89	59.91	62.26	62.96	60.62	61.22	61.73	

Source: IICA, based on data from the United Nations (COMTRADE), FAO (FAOSTAT) and World Bank (WDI).

Share of Imports in the Domestic Food Supply (%)

	2000	2001	2002	2003	2004	2005	2006	2007	2008	2009	2010	2011
Vegetable oils	2.61	3.53	0.91	1.08	2.12	1.48	1.69	1.70	0.78	0.68	0.60	
Meat	1.96	1.58	0.27	0.98	0.58	0.42	0.44	0.57	0.50	0.54	0.91	
Cereals	0.47	0.33	0.03	0.05	0.10	0.04	0.02	0.04	0.09	0.08	0.04	
Fruits	6.30	5.23	3.62	4.55	4.65	4.42	4.22	4.92	5.34	5.75	5.84	
Vegetables	3.06	2.84	0.76	1.07	1.00	0.62	0.42	2.01	0.95	0.60	0.50	
Milk	0.00	0.06	0.00	0.41	0.46	0.04	0.00	0.00	0.00	0.00	0.00	
Roots and tubers	0.27	0.15	0.14	0.03	0.03	0.07	0.01	0.88	0.11	0.10	0.05	

Source: IICA, based on data from the United Nations (COMTRADE) and FAO (FAOSTAT).

Share of Imports in the Domestic Caloric Supply (%)	2000	2001	2002	2003	2004	2005	2006	2007	2008	2009	2010	2011
Caloric Dependence (%)	1.10	0.96	0.34	0.48	0.56	0.50	0.47	0.51	0.55	0.52	0.40	

Source: IICA, based on data from the United Nations (COMTRADE) and FAO (FAOSTAT).

International Monetary Reserves Measured in Months of Food Imports	2000	2001	2002	2003	2004	2005	2006	2007	2008	2009	2010	2011
Months of Food Imports	240	153	318	300	324	429	454	342	219	408	440	317

Source: IICA, based on data from the United Nations (COMTRADE) y World Bank (WDI).

	2000	2001	2002	2003	2004	2005	2006	2007	2008	2009	2010	2011
Agricultural Deflator / GDP Deflator	100.0	92.3	188.1	193.9	200.3	177.9	167.4	184.3	211.1	193.9	218.9	202.5
Agricultural Deflator	100.0	91.3	79.3	95.4	106.8	103.9	105.4	130.0	174.8	149.6	185.8	191.0
GDP Deflator	100.0	98.9	42.2	49.2	53.3	58.4	62.9	70.6	82.8	77.2	84.9	94.3

Source: IICA, based on data from World Bank, WDI.

AVA Deflator Adjusted by GDP Deflator (millions of US\$)	2000	2001	2002	2003	2004	2005	2006	2007	2008	2009	2010	2011
	13,300.5	12,411.7	24,707.9	27,211.5	27,688.9	27,316.1	26,385.0	31,891.6	35,601.6	27,571.9	39,857.4	39,270

Source: IICA, based on data from World Bank, WDI.

External Terms of Trade (ETT) for Agriculture (2005=100)	2000	2001	2002	2003	2004	2005	2006	2007	2008	2009	2010	2011
ETT Agr	88.2	89.5	94.9	107.4	108.9	100.0	101.1	108.1	118.1	113.8		119.9

Source: IICA, based on data from the United Nations, COMTRADE.

External Terms of Trade (2005=100)	2000	2001	2002	2003	2004	2005	2006	2007	2008	2009	2010	2011
Terms of trade for goods and services	102.6	101.7	93.9	100.4	102.0	100.0	105.1	108.7	120.2	114.2	114.5	121.4

Source: World Bank, WDI.